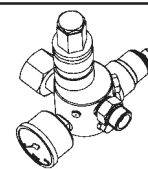




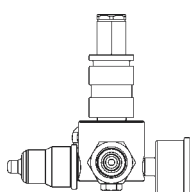
Pneumatic Slave Valve



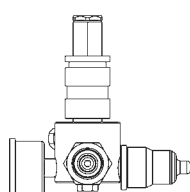
Stock codes D21025 and D21025.1

TA 05 Oct 2004

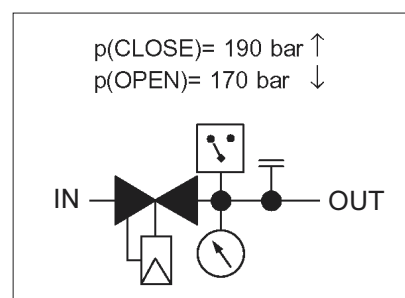
Stock code	Note
D21025	Product as shown in this data sheet
D21025.1	Pressure gauge and pressure switch locations mirrored



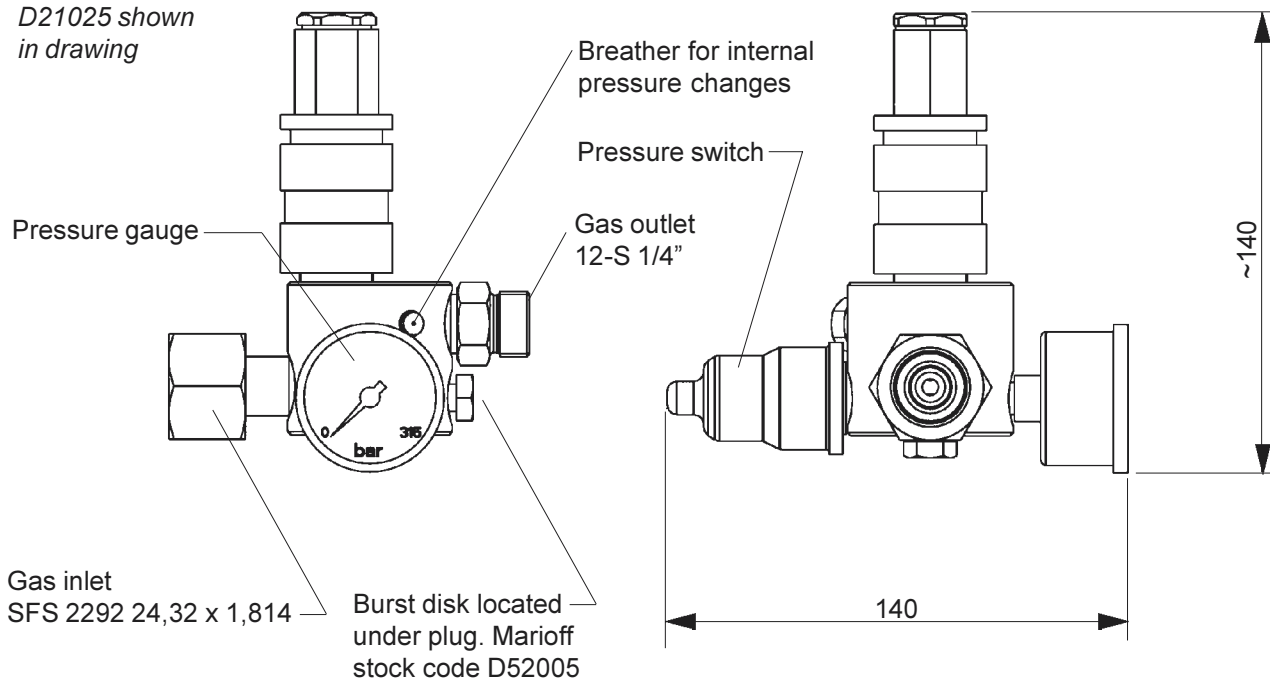
D21025



D21025.1



D21025 shown in drawing



General	Body material	Brass, nickel plated
	Max. working pressure	200 bar
Operation	<p>The valve is normally connected directly or via an adapter to an air or nitrogen cylinder. It is used to release the contents of the cylinder into a GPU, a water accumulator unit (MAU, DAU, KAU, ...) or an MT3 system or equivalent. Pneumatic slave valve is released by the pressure in the gas outlet piping (released by the actuator valve) to allow the gas flow to the piping system. To monitor the gas cylinder pressure, the valve is equipped with a pressure gauge and a pressure switch. Once released, the valve remains open as long as the valve is pressurised.</p>	